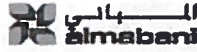




Drawing Change Notice (DCN) Form

Electronic documents once printed, are uncontrolled and may become out-dated. Refer to Aconex for current revision.

<h1>Drawing Change Notice (DCN)</h1>		DCN Document Number
		M-BAR-1F4TS0-CA00-DCN-000001
		Page 1 of 21
		Date of DCN
		04-JULY-18
Document/Drawing No.	Rev. no	Document/Drawing title
M-BAR-1F4TS0-CA00-EDR-600010	000v01	DEEP UNDERGROUND STATION
M-BAR-1F4TS0-CA00-EDR-600020		LINE 1 - TRANSFER STATION 1F4
M-BAR-1F4TS0-CA00-EDR-600030		ARCHITECTURE
M-BAR-1F4TS0-CA00-EDR-600031		LIFT SETTING OUT
M-BAR-1F4TS0-CA00-EDR-600032		FULL PACKAGE.
M-BAR-1F4TS0-CA00-EDR-600033		
M-BAR-1F4TS0-CA00-EDR-600040		
M-BAR-1F4TS0-CA00-EDR-600050		
M-BAR-1F4TS0-CA00-EDR-600051		
M-BAR-1F4TS0-CA00-EDR-600052		
M-BAR-1F4TS0-CA00-EDR-600060		
M-BAR-1F4TS0-CA00-EDR-600061		
M-BAR-1F4TS0-CA00-EDR-600070		
M-BAR-1F4TS0-CA00-EDR-600071		
M-BAR-1F4TS0-CA00-EDR-600080		
M-BAR-1F4TS0-CA00-EDR-600081		
M-BAR-1F4TS0-CA00-EDR-600090		
M-BAR-1F4TS0-CA00-EDR-600091		
M-BAR-1F4TS0-CA00-EDR-600100		
M-BAR-1F4TS0-CA00-EDR-600110		
M-BAR-1F4TS0-CA00-EDR-600120		
Reason for change <p>Addition of internal glazed and steel fin lift partitions to create high and low-level shaft separation to duplex and triplex lifts for access and maintenance safety requirements following comments from TK_M-BAC-GENCORR-047909_1F4 Elevators, received via email from Oliver Bishop on 23/03/2018.</p> <p>Inclusion of new beams to lifts ETE 100004/05/06 to support pit access ladders following comments from TK_M-BAC-GENCORR-047909_1F4 Elevators.</p> <p>Lift call button locations amended where clouded on the drawings in accordance with TK Shop Drgs: M-BAC-WTRAN-058569: 20180404-CSR-1F4-00 received on 04/04/2018.</p> <p>General detail tag updates, inclusion of sump pits to pit slabs at lifts ETE 10001,02/3,07,09/10,11,12,15,16 and extension of wall cladding to pit floors in duplex and triplex lifts to clarify information in IFC submission.</p>		







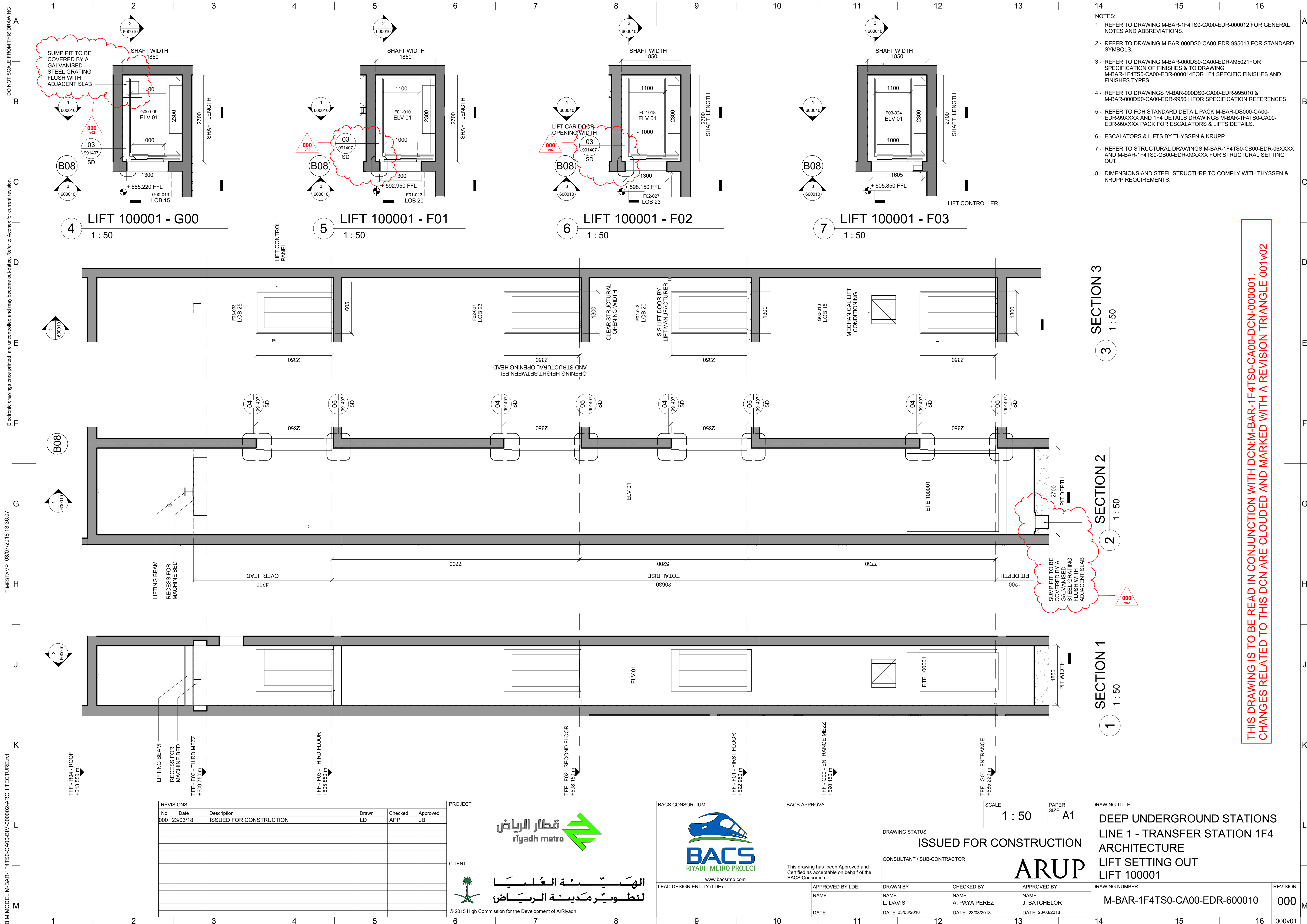
Drawing Change Notice (DCN) Form

Electronic documents once printed, are uncontrolled and may become out-dated. Refer to Aconex for current revision.

Description of change



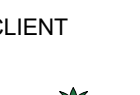
- Laminated glass partitions installed at top and bottom levels of duplex and triplex lifts. Pits are to be separated by mild steel plates.
- Inclusion of new beams to lifts ETE 100004/05/06 to support pit access ladders.
- Wall cladding extended to lift pit where indicated.
- Inclusion of sump pits to pit slabs at lifts ETE 10001,02/3,07,09/10,11,12,15,16
- General detail tag additions and amendments.
- Lift call button locations amended where clouded.

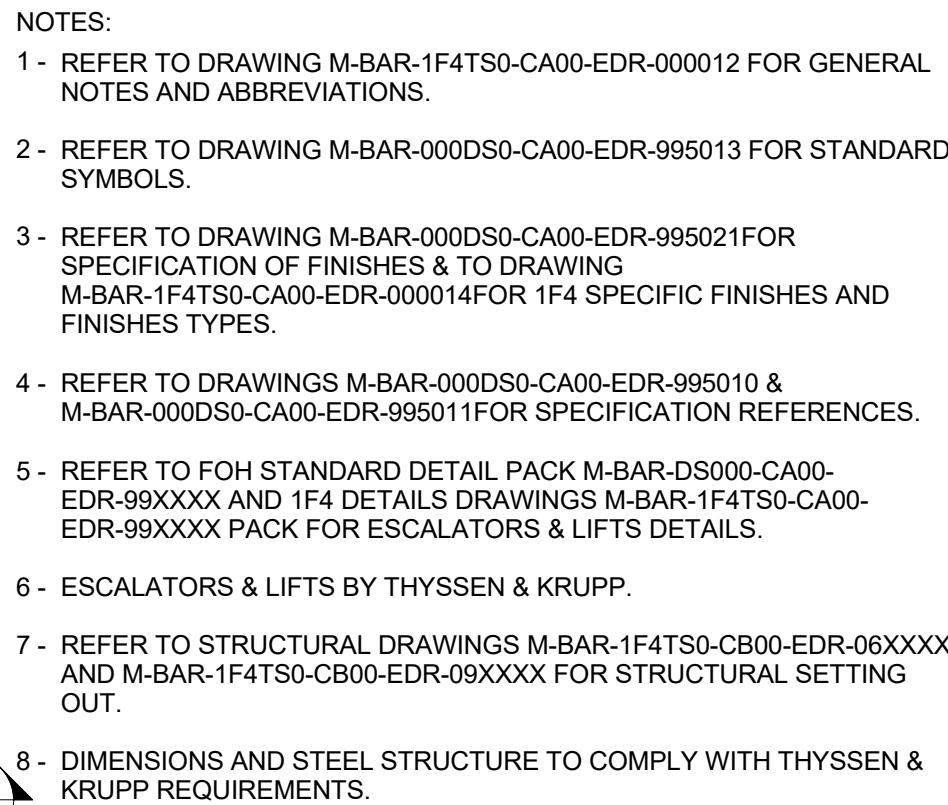
Prepared by	Checked by	LDE	EM
Anthony Murphy 	Aitana Paya Perez 	John Batchelor 	
Date 04-July-18	Date 04-July-18	Date 04-July-18	Date 29 AUG 18



THIS DRAWING IS TO BE READ IN CONJUNCTION WITH DCN:M-BAR-1F4TS0-CA00-DCN-000001.
CHANGES RELATED TO THIS DCN ARE CLOUDED AND MARKED WITH A REVISION TRIANGLE 001v02



<div>PROJECT</div> <div></div>			<div>BACS CONSORTIUM</div> <div></div> <div>www.bacsrmp.com</div>			<div>BACS APPROVAL</div> <div>This drawing has been Approved and Certified as acceptable on behalf of the BACS Consortium.</div>			<div>SCALE</div> <div>1 : 50</div>		<div>PAPER SIZE</div> <div>A1</div>		<div>DRAWING TITLE</div> <div>DEEP UNDERGROUND STATIONS LINE 1 - TRANSFER STATION 1F4 ARCHITECTURE LIFT SETTING OUT LIFT 100002/3</div>													
<div>CLIENT</div> <div><div>الهَيئة العامة لتطوير مدينة الرياض</div></div> <div>© 2015 High Commission for the Development of ArRiyadh</div>			<div>LEAD DESIGN ENTITY (LDE)</div>			<div>APPROVED BY LDE</div> <div>NAME</div> <div>DATE</div>		<div>DRAWING STATUS</div> <div>ISSUED FOR CONSTRUCTION</div> <div>CONSULTANT / SUB-CONTRACTOR</div> <div>ARUP</div>		<div>APPROVED BY</div> <div>NAME</div> <div>DATE</div>		<div>DRAWING NUMBER</div> <div>M-BAR-1F4TS0-CA00-EDR-600020</div>			<div>REVISION</div> <div>000</div>											
6			7			8			9		10		11		12		13		14		15		16		000v01	

[illegible]

© 2015 High Commission for the Development of ArRiyadh

LEAD DESIGN ENTITY (LDE)

This drawing has been Approved and Certified as acceptable on behalf of the BACS Consortium.

ing has been Approved and
as acceptable on behalf of the
nsortium.

APPROVED BY LDE
NAME
DATE

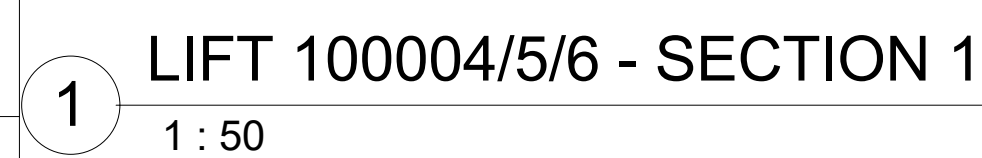
CONSULTANT / SUB-CONTRACTOR

DRAWN BY	CHECKED BY	APPROVED BY
NAME L. DAVIS	NAME A. PAYA PEREZ	NAME J. BATCHELO
DATE 23/03/2018	DATE 23/03/2018	DATE 23/03/2018

DRAWING NUMBER	M-BAR-1F4TS0-CA00-EDR-600030
----------------	------------------------------

REVISION

000v01

[illegible]

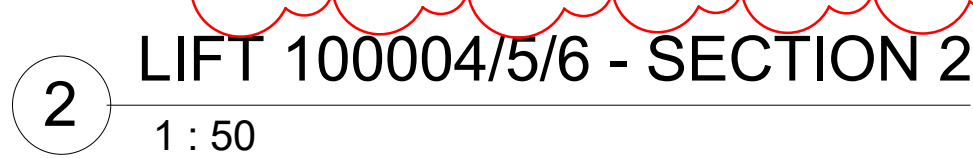
CLIENT


© 2015 High Commission for the Development of ArRiyadh

قطار الرياض
riyadh metro

الهَيئَةُ الْعُلْيَا
لِتَطْوِيرِ مَدِينَةِ الرِّيَاضِ

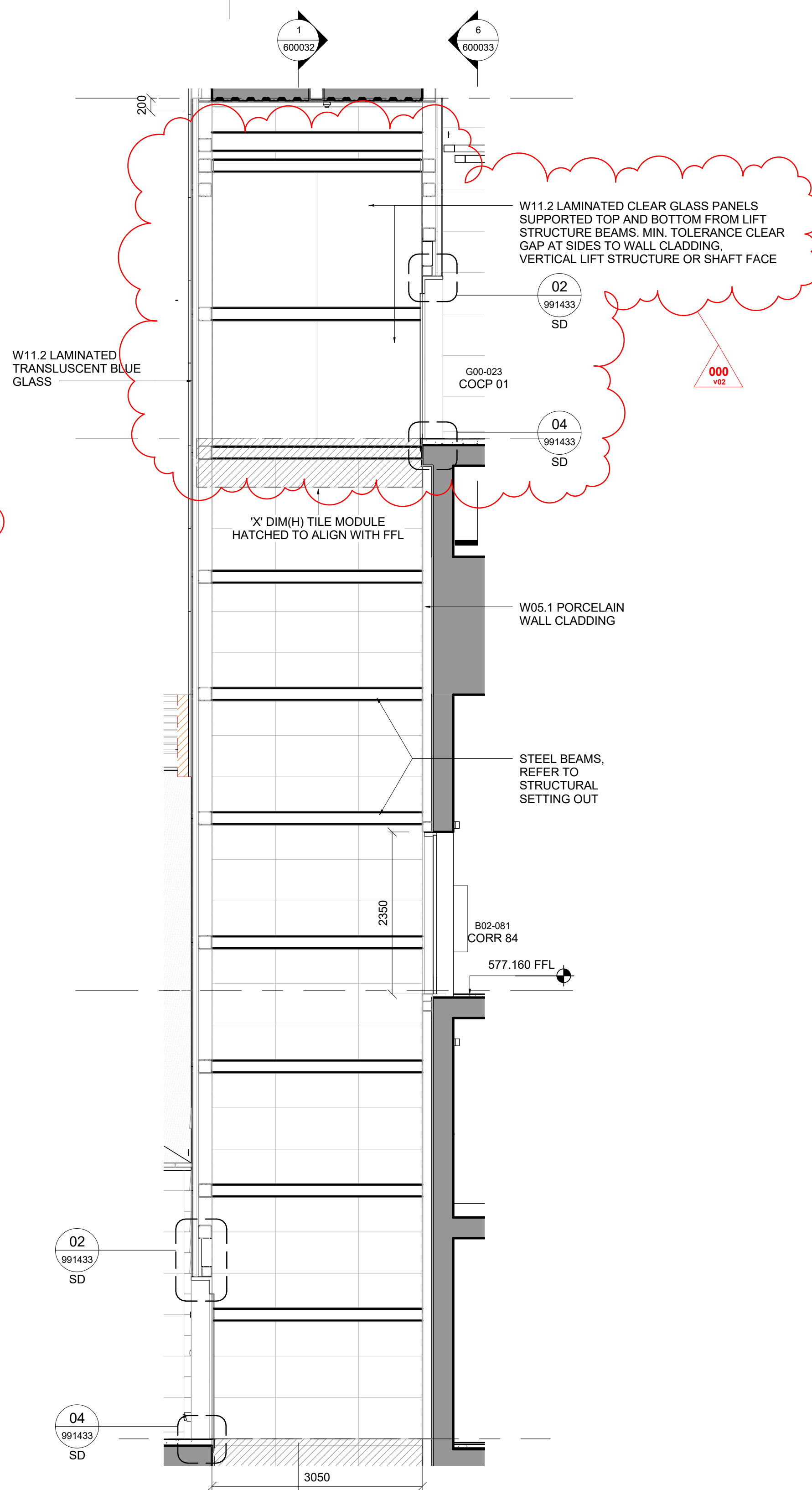
© 2015 High Commission for the Development of ArRiyadh



<div>BACS CONSORTIUM</div> <div><div>BACS RIYADH METRO PROJECT</div><div>www.bacsmp.com</div></div>		<div>BACS APPROVAL</div> <div>This drawing has been Approved and Certified as acceptable on behalf of the BACS Consortium.</div>		<div>SCALE</div> <div>1 : 50</div>		<div>PAPER SIZE</div> <div>A1</div>		<div>DRAWING TITLE</div> <div>DEEP UNDERGROUND STATIONS LINE 1 - TRANSFER STATION 1F4 ARCHITECTURE LIFT SETTING OUT LIFT 100004/5/6 - SHEET 2</div>	
<div>LEAD DESIGN ENTITY (LDE)</div>		<div>DRAWING STATUS</div> <div>ISSUED FOR CONSTRUCTION</div>		<div>CONSULTANT / SUB-CONTRACTOR</div> <div>ARUP</div>		<div>DRAWING NUMBER</div> <div>M-BAR-1F4TS0-CA00-EDR-600031</div>		<div>REVISION</div> <div>000</div>	
		<div>APPROVED BY LDE</div> <div>NAME</div> <div>DATE</div>							

THIS DRAWING IS TO BE READ IN CONJUNCTION WITH DCN:M-BAR-1F4TSO-CA00-DCN-0000001.
CHANGES RELATED TO THIS DCN ARE CLOUDED AND MARKED WITH A REVISION TRIANGLE 001V02

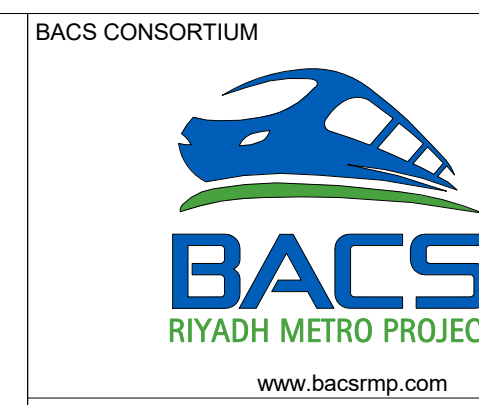
- NOTES:
- 1- REFER TO DRAWING M-BAR-1F4TS0-CA00-EDR-000012 FOR GENERAL NOTES AND ABBREVIATIONS.
 - 2- REFER TO DRAWING M-BAR-000D50-CA00-EDR-995013 FOR STANDARD SYMBOLS.
 - 3- REFER TO DRAWING M-BAR-000D50-CA00-EDR-995021FOR SPECIFICATION OF FINISHES & TO DRAWING M-BAR-1F4TS0-CA00-EDR-000014FOR 1F4 SPECIFIC FINISHES AND FINISHES TYPES.
 - 4- REFER TO DRAWINGS M-BAR-000D50-CA00-EDR-995010 & M-BAR-000D50-CA00-EDR-995011FOR SPECIFICATION REFERENCES.
 - 5- REFER TO FOH STANDARD DETAIL PACK M-BAR-DS000-CA00-EDR-99XXXX AND 1F4 DETAILS DRAWINGS M-BAR-1F4TS0-CA00-EDR-99XXXX PACK FOR ESCALATORS & LIFTS DETAILS.
 - 6- ESCALATORS & LIFTS BY THYSSEN & KRUPP.
 - 7- REFER TO STRUCTURAL DRAWINGS M-BAR-1F4TS0-CB00-EDR-06XXXX AND M-BAR-1F4TS0-CB00-EDR-09XXXX FOR STRUCTURAL SETTING OUT.
 - 8- DIMENSIONS AND STEEL STRUCTURE TO COMPLY WITH THYSSEN & KRUPP REQUIREMENTS.



- NOTES:
- 1 - REFER TO DRAWING M-BAR-1F4T50-CA00-EDR-000012 FOR GENERAL NOTES AND ABBREVIATIONS.
 - 2 - REFER TO DRAWING M-BAR-000D50-CA00-EDR-995013 FOR STANDARD SYMBOLS.
 - 3 - REFER TO DRAWING M-BAR-000D50-CA00-EDR-995021 FOR SPECIFICATION OF FINISHES & TO DRAWING M-BAR-1F4T50-CA00-EDR-000014 FOR 1F4 SPECIFIC FINISHES AND FINISHES TYPES.
 - 4 - REFER TO DRAWINGS M-BAR-000D50-CA00-EDR-995010 & M-BAR-000D50-CA00-EDR-995011 FOR SPECIFICATION REFERENCES.
 - 5 - REFER TO FOH STANDARD DETAIL PACK M-BAR-DS000-CA00-EDR-99XXXX AND 1F4 DETAILS DRAWINGS M-BAR-1F4T50-CA00-EDR-99XXXX PACK FOR ESCALATORS & LIFTS DETAILS.
 - 6 - ESCALATORS & LIFTS BY THYSSEN & KRUPP.
 - 7 - REFER TO STRUCTURAL DRAWINGS M-BAR-1F4T50-CB00-EDR-06XXXX AND M-BAR-1F4T50-CB00-EDR-09XXXX FOR STRUCTURAL SETTING OUT.
 - 8 - DIMENSIONS AND STEEL STRUCTURE TO COMPLY WITH THYSSEN & KRUPP REQUIREMENTS.

2 LIFT 100004/5/6 - SECTION 2 A
1 : 50

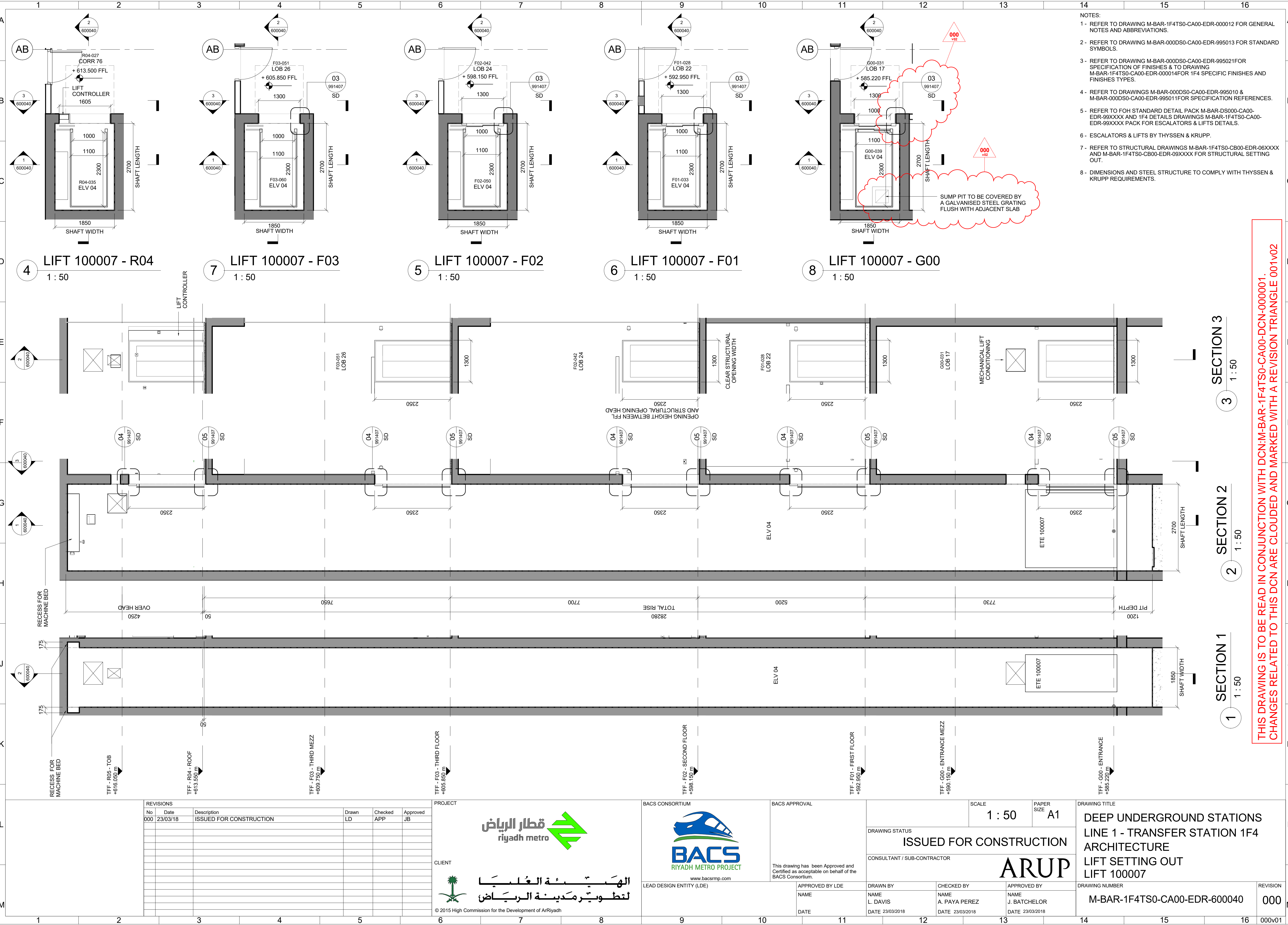
THIS DRAWING IS TO BE READ IN CONJUNCTION WITH DCN:M-BAR-1F4TS0-CA00-DCN-000001.
CHANGES RELATED TO THIS DCN ARE CLOUDED AND MARKED WITH A REVISION TRIANGLE 001v02



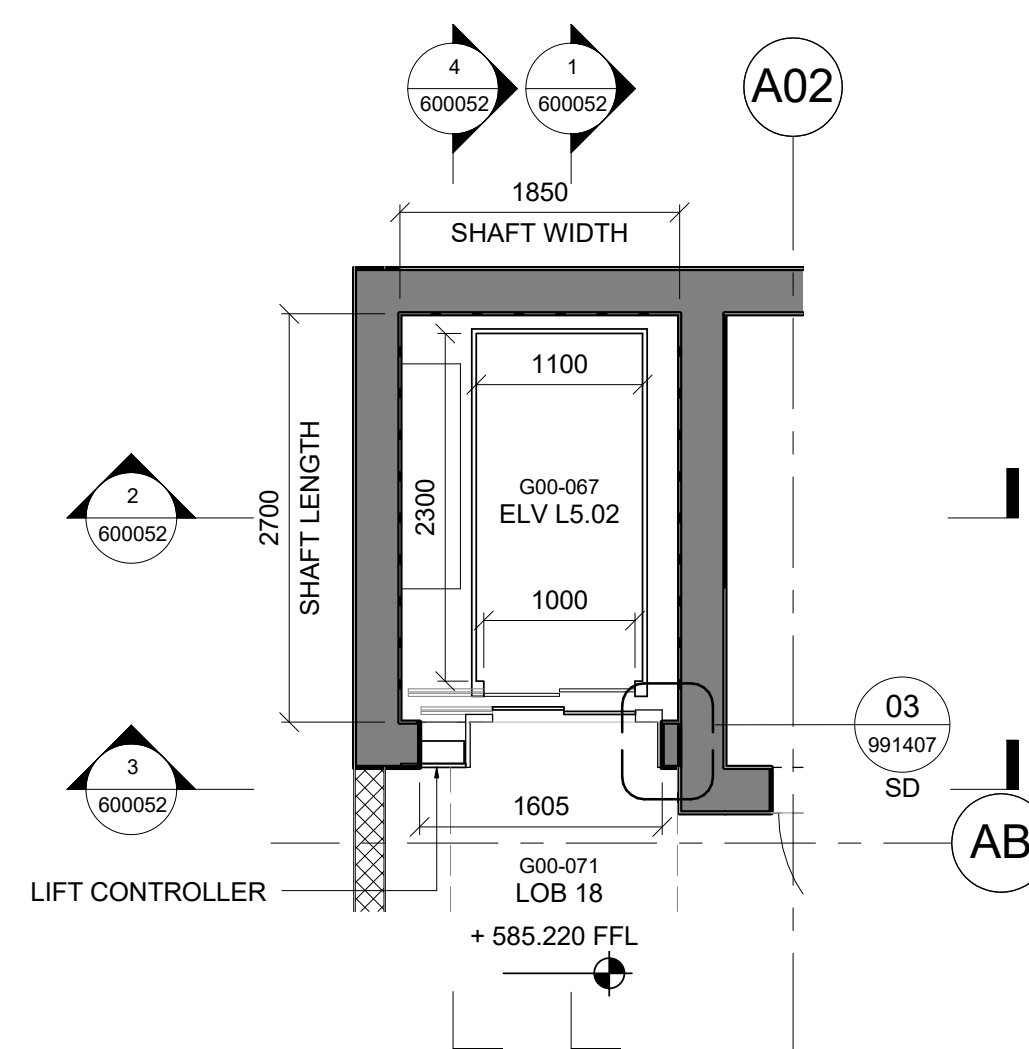
BACS APPROVAL	
<p>This drawing has been Approved and Certified as acceptable on behalf of the BACS Consortium.</p>	
	APPROVED BY LDE NAME DATE

		SCALE 1 : 50	SAPER SIZE A1
DRAWING STATUS ISSUED FOR CONSTRUCTION			
CONSULTANT / SUB-CONTRACTOR ARUP			
DRAWN BY NAME L. DAVIS DATE 23/03/2018	CHECKED BY NAME A. PAYA REZ DATE 23/03/2018	APPROVED BY NAME J. BATCHELOR DATE 23/03/2018	

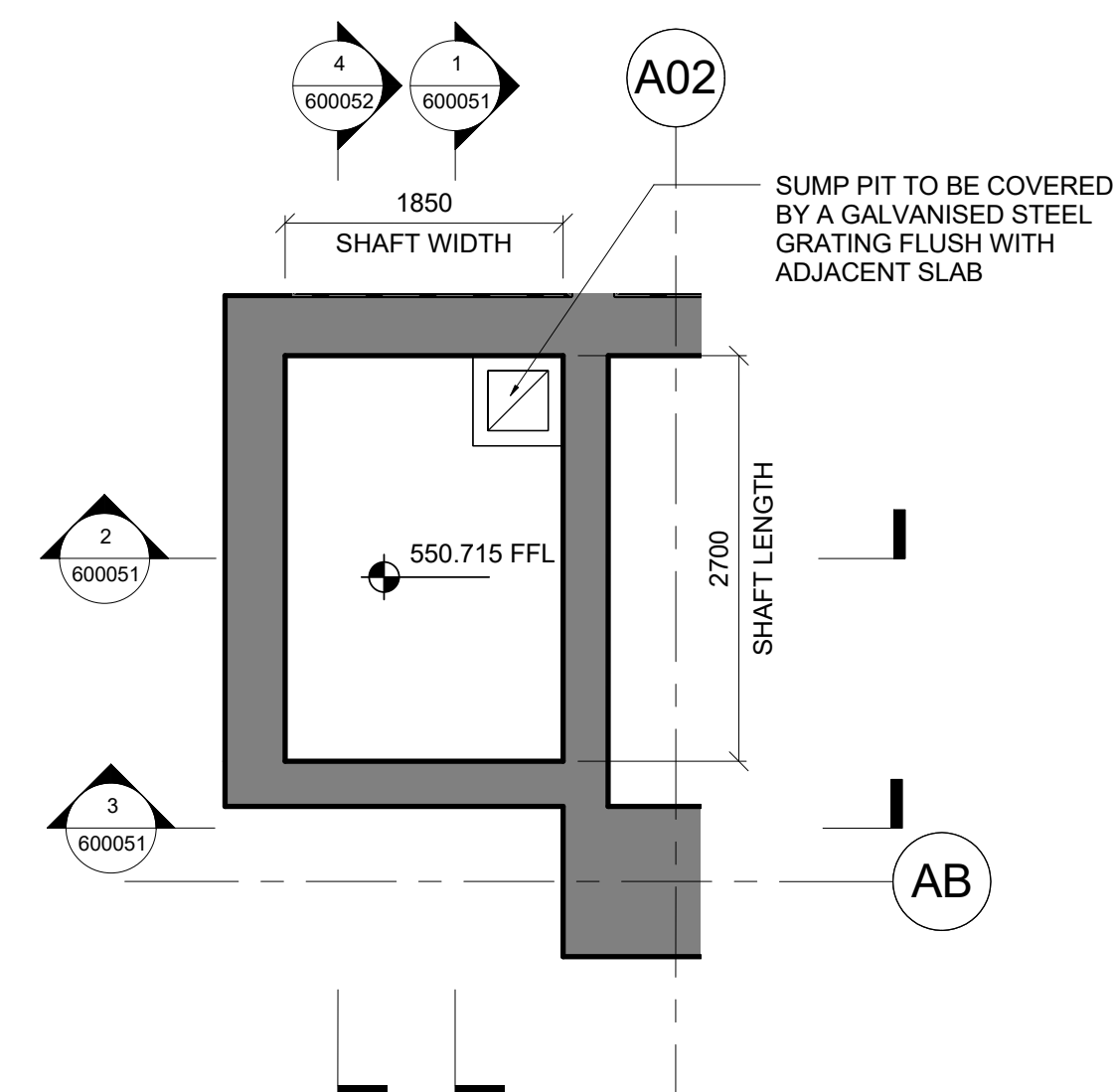
DRAWING TITLE	DEEP UNDERGROUND STATIONS LINE 1 - TRANSFER STATION 1F4 ARCHITECTURE LIFT SETTING OUT LIFT 100004/5/6 - SHEET 3	
DRAWING NUMBER	M-BAR-1F4TS0-CA00-EDR-600032	REVISION 000



THIS DRAWING IS TO BE READ IN CONJUNCTION WITH DCN:M-BAR-1F4TS0-CA00-DCN-000001.
CHANGES RELATED TO THIS DCN ARE CLOUDED AND MARKED WITH A REVISION TRIANGLE 001v02



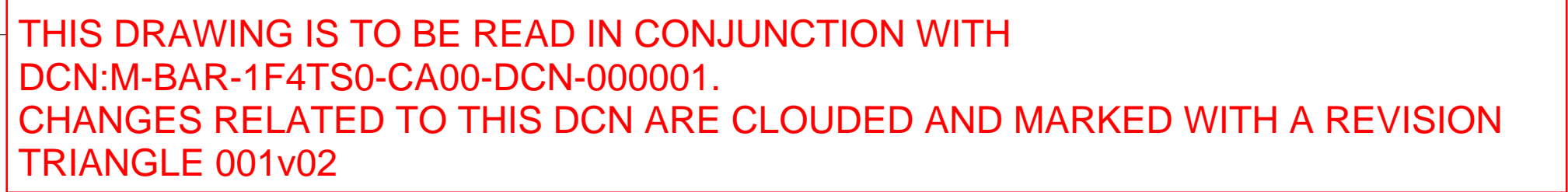
6 LIFT_100008 - G00
1 : 50







1 LIFT_100008 - B08
1 : 50

- THIS DRAWING IS TO BE READ IN CONJUNCTION WITH DCN:M-BAR-1F4TS0-CA00-DCN-000001.
CHANGES RELATED TO THIS DCN ARE CLOUDED AND MARKED WITH A REVISION TRIANGLE 001v02

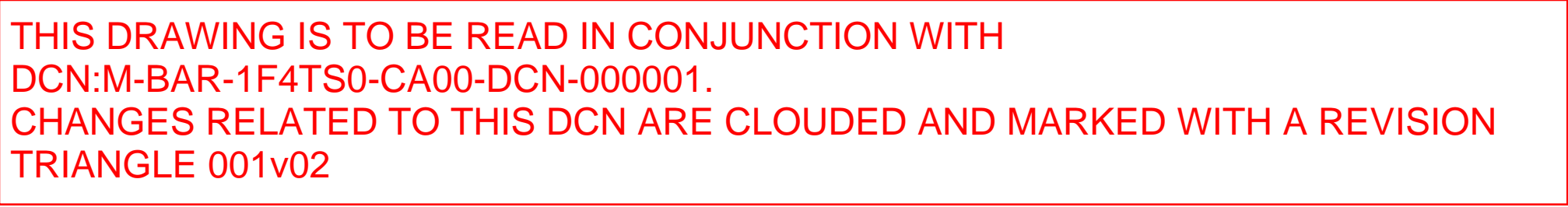
DRAWING TITLE		
DEEP UNDERGROUND STATIONS LINE 1 - TRANSFER STATION 1F4 ARCHITECTURE LIFT SETTING OUT LIFT 100008 - SHEET 1		
DRAWING NUMBER		REVISION
M-BAR-1F4TS0-CA00-EDR-600050		000



3 LIFT_100008 SECTION 3
1:50

<div>PROJECT</div> <div>  </div>	<div>BACS CONSORTIUM</div> <div>  </div>	<div>BACS APPROVAL</div> <div>  </div>	<div>SCALE</div> <div>1 : 50</div> <div>PAPER SIZE</div> <div>A1</div>	<div>DRAWING TITLE</div> <div>DEEP UNDERGROUND STATIONS</div> <div>LINE 1 - TRANSFER STATION 1F4</div> <div>ARCHITECTURE</div> <div>LIFT SETTING OUT</div> <div>LIFT 100008 - SHEET 2</div>
<div>CLIENT</div> <div>  </div> <div> المملكة العربية السعودية لتطوير مدينة الرياض </div> <div> © 2015 High Commission for the Development of ArRiyadh </div>	<div>www.bacsrmpp.com</div> <div>LEAD DESIGN ENTITY (LDE)</div>	<div>This drawing has been Approved and Certified as acceptable on behalf of the BACS Consortium.</div> <div>APPROVED BY LDE</div> <div>NAME</div> <div>DATE</div>	<div>ISSUED FOR CONSTRUCTION</div> <div>CONSULTANT / SUB-CONTRACTOR</div> <div>ARUP</div> <div>DRAWN BY</div> <div>NAME</div> <div>L. DAVIS</div> <div>DATE</div> <div>23/03/2018</div> <div>CHECKED BY</div> <div>NAME</div> <div>A. PAYA PEREZ</div> <div>DATE</div> <div>23/03/2018</div> <div>APPROVED BY</div> <div>NAME</div> <div>J. BATCHELOR</div> <div>DATE</div> <div>23/03/2018</div>	<div>DRAWING NUMBER</div> <div>M-BAR-1F4TS0-CA00-EDR-600051</div> <div>REVISION</div> <div>000</div>

BIM MODEL M-BAR-1F4TS0-CA00-BIM-000002-ARCHITECTURE.M4



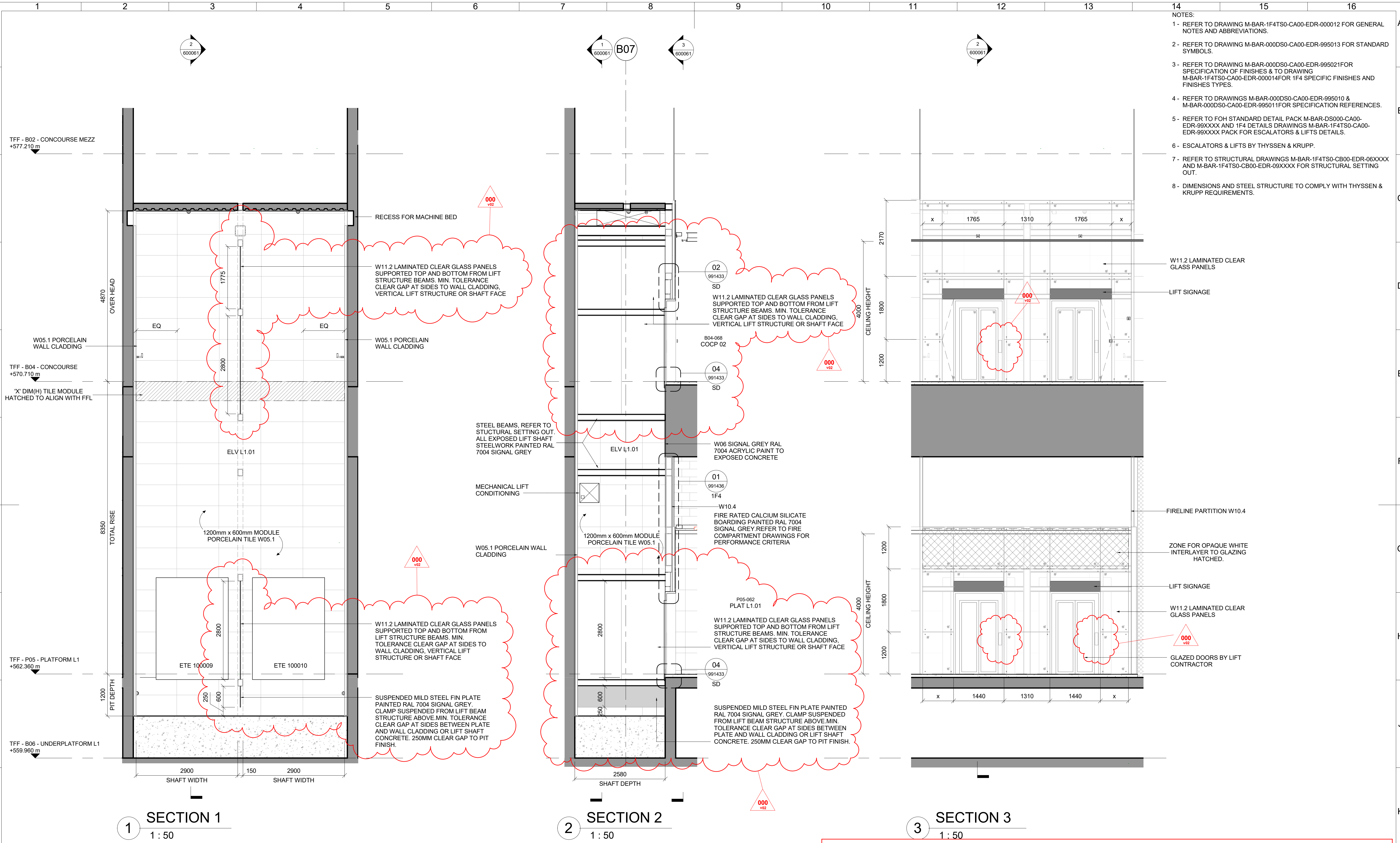
<div>PROJECT</div> <div><div><div><div><div><div></div><div>قطار الرياض</div><div>riyadh metro</div></div><div><div></div><div></div><div></div><div></div><div></div><div></div></div></div></div></div></div>			<div>BACS CONSORTIUM</div> <div><div><div><div></div><div></div><div></div></div><div><div>BACS</div><div>RIYADH METRO PROJECT</div></div></div><div>www.bacsrmp.com</div></div>			<div>BACS APPROVAL</div> <div>This drawing has been Approved and Certified as acceptable on behalf of the BACS Consortium.</div>			<div>SCALE</div> <div>As indicated</div>			<div>PAPER SIZE</div> <div>A1</div>			<div>DRAWING TITLE</div> <div>DEEP UNDERGROUND STATIONS LINE 1 - TRANSFER STATION 1F4 ARCHITECTURE LIFT SETTING OUT LIFT 100008 - SHEET 3</div>																				
<div>CLIENT</div> <div><div><div><div></div><div>الهَيَاة الْعَلِيَا</div><div>لتطوير مدينة الرياض</div></div><div>© 2015 High Commission for the Development of ArRiyadh</div></div></div>			<div>LEAD DESIGN ENTITY (LDE)</div>			<div>APPROVED BY LDE</div> <div>NAME</div> <div>DATE</div>			<div>DRAWING STATUS</div> <div>ISSUED FOR CONSTRUCTION</div>			<div>CONSULTANT / SUB-CONTRACTOR</div> <div>ARUP</div>																							
						<div>DRAWN BY</div> <div>NAME</div> <div>L. DAVIS</div> <div>DATE 23/03/2018</div>			<div>CHECKED BY</div> <div>NAME</div> <div>A. PAYA PEREZ</div> <div>DATE 23/03/2018</div>			<div>APPROVED BY</div> <div>NAME</div> <div>J. BATCHELOR</div> <div>DATE 23/03/2018</div>			<div>DRAWING NUMBER</div> <div>M-BAR-1F4TS0-CA00-EDR-600052</div>			<div>REVISION</div> <div>000</div>																	
6			7			8			9			10			11			12			13			14			15			16			000v01		

DO NOT SCALE FROM THIS DRAWING

Electronic drawings once printed, are uncontrolled and may become outdated. Refer to Aconex for current revision.



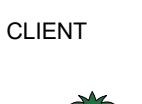
TIME/STAMP 03/07/2018 13:37:35

BIM MODEL M-BAR-1F4TS0-CA00-BIM-000002-ARCHITECTURE.rvt

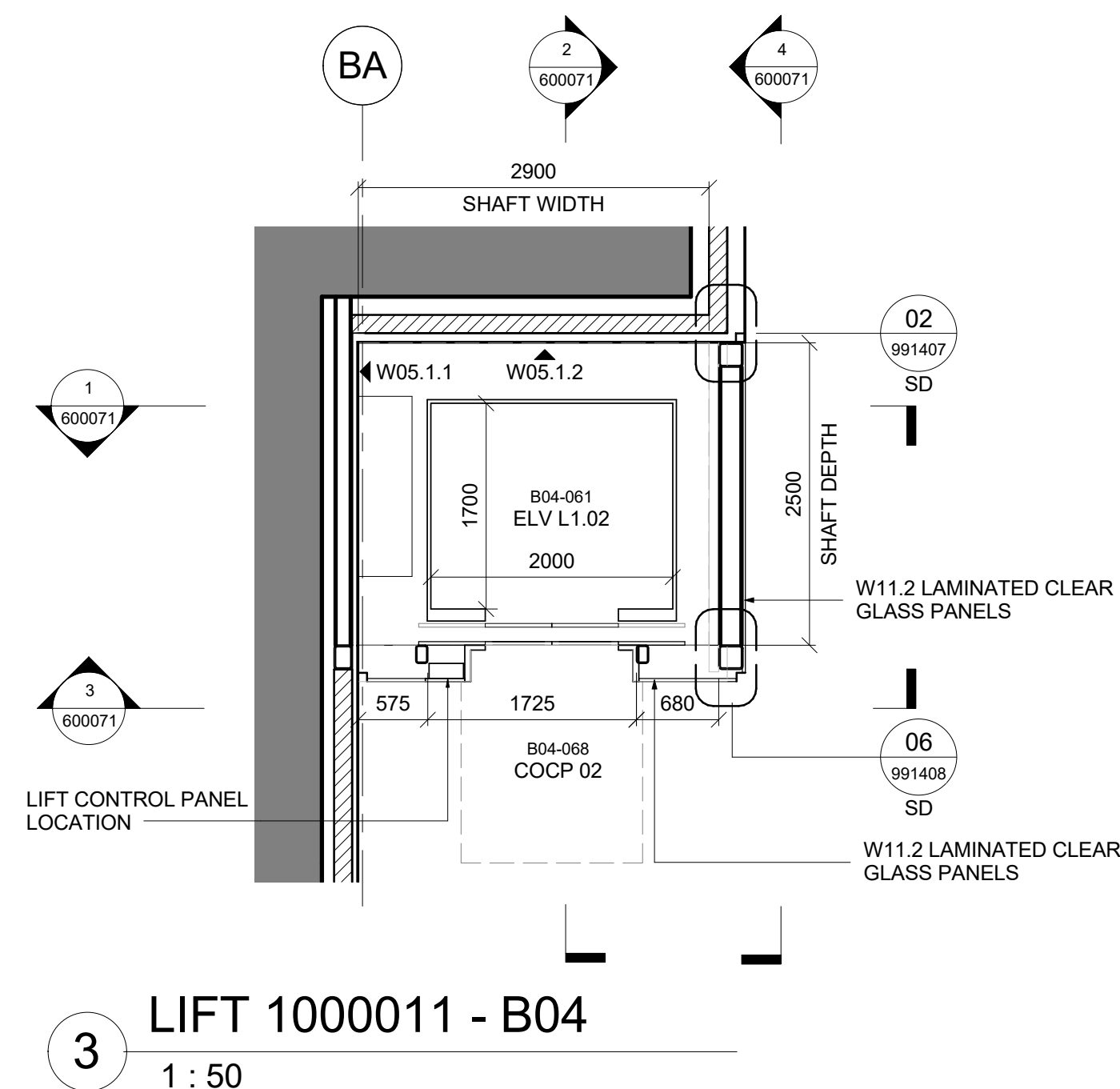


- NOTES:
- 1 - REFER TO DRAWING M-BAR-1F4TS0-CA00-EDR-000012 FOR GENERAL NOTES AND ABBREVIATIONS.
 - 2 - REFER TO DRAWING M-BAR-000DS0-CA00-EDR-995013 FOR STANDARD SYMBOLS.
 - 3 - REFER TO DRAWING M-BAR-000DS0-CA00-EDR-995021 FOR SPECIFICATION OF FINISHES & TO DRAWING M-BAR-1F4TS0-CA00-EDR-000014 FOR 1F4 SPECIFIC FINISHES AND FINISHES TYPES.
 - 4 - REFER TO DRAWINGS M-BAR-000DS0-CA00-EDR-995010 & M-BAR-000DS0-CA00-EDR-995011 FOR SPECIFICATION REFERENCES.
 - 5 - REFER TO FOH STANDARD DETAIL PACK M-BAR-DS000-CA00-EDR-99XXXX AND 1F4 DETAILS DRAWINGS M-BAR-1F4TS0-CA00-EDR-99XXXX PACK FOR ESCALATORS & LIFTS DETAILS.
 - 6 - ESCALATORS & LIFTS BY THYSEN & KRUPP.
 - 7 - REFER TO STRUCTURAL DRAWINGS M-BAR-1F4TS0-CB00-EDR-06XXXX AND M-BAR-1F4TS0-CB00-EDR-09XXXX FOR STRUCTURAL SETTING OUT.
 - 8 - DIMENSIONS AND STEEL STRUCTURE TO COMPLY WITH THYSEN & KRUPP REQUIREMENTS.



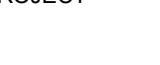
THIS DRAWING IS TO BE READ IN CONJUNCTION WITH DCN:M-BAR-1F4TS0-CA00-DCN-000001. CHANGES RELATED TO THIS DCN ARE CLOUDED AND MARKED WITH A REVISION TRIANGLE 001v02

REVISIONS					PROJECT					BACS CONSORTIUM					BACS APPROVAL					DRAWING TITLE																																																																																																																																																																																																																																																																																																																																																																																																																																																																																																																																																																																																																																																																																																																																																																																																																																																																																																																																																																																																																																																																																																																																																																																																																																																																																																																																																																																																																																																																																																																																																																																																																																																																																																																																																																																																																																																																																																																																																																																																																																																																																																																																																																																																																																																																																																																																																																																																																																																																																																									
No	Date	Description	Drawn	Checked	Approved											SCALE 1 : 50					PAPER SIZE A1					DEEP UNDERGROUND STATIONS LINE 1 - TRANSFER STATION 1F4 ARCHITECTURE LIFT SETTING OUT LIFT 100009/10 - SHEET 2																																																																																																																																																																																																																																																																																																																																																																																																																																																																																																																																																																																																																																																																																																																																																																																																																																																																																																																																																																																																																																																																																																																																																																																																																																																																																																																																																																																																																																																																																																																																																																																																																																																																																																																																																																																																																																																																																																																																																																																																																																																																																																																																																																																																																																																																																																																																																																																																																																																																																																			
000	23/03/18	ISSUED FOR CONSTRUCTION	LD	APP	JB											DRAWING STATUS ISSUED FOR CONSTRUCTION																																																																																																																																																																																																																																																																																																																																																																																																																																																																																																																																																																																																																																																																																																																																																																																																																																																																																																																																																																																																																																																																																																																																																																																																																																																																																																																																																																																																																																																																																																																																																																																																																																																																																																																																																																																																																																																																																																																																																																																																																																																																																																																																																																																																																																																																																																																																																																																																																																																																																																													
																CONSULTANT / SUB-CONTRACTOR ARUP																																																																																																																																																																																																																																																																																																																																																																																																																																																																																																																																																																																																																																																																																																																																																																																																																																																																																																																																																																																																																																																																																																																																																																																																																																																																																																																																																																																																																																																																																																																																																																																																																																																																																																																																																																																																																																																																																																																																																																																																																																																																																																																																																																																																																																																																																																																																																																																																																																																																																																													
					CLIENT					LEAD DESIGN ENTITY (LDE)					APPROVED BY LDE					DRAWN BY					CHECKED BY					APPROVED BY					DRAWING NUMBER					REVISION																																																																																																																																																																																																																																																																																																																																																																																																																																																																																																																																																																																																																																																																																																																																																																																																																																																																																																																																																																																																																																																																																																																																																																																																																																																																																																																																																																																																																																																																																																																																																																																																																																																																																																																																																																																																																																																																																																																																																																																																																																																																																																																																																																																																																																																																																																																																																																																																																																																																																					
										الهَيَاةُ الْعَلِيَا لِتَطْوِيَر مَدِيْنَةِ الرِّيَاةِ										NAME					NAME					NAME					NAME					M-BAR-1F4TS0-CA00-EDR-600061					000																																																																																																																																																																																																																																																																																																																																																																																																																																																																																																																																																																																																																																																																																																																																																																																																																																																																																																																																																																																																																																																																																																																																																																																																																																																																																																																																																																																																																																																																																																																																																																																																																																																																																																																																																																																																																																																																																																																																																																																																																																																																																																																																																																																																																																																																																																																																																																																																																																																																																
					© 2015 High Commission for the Development of ArRiyadh															DATE					DATE 23/03/2018					DATE 23/03/2018					DATE 23/03/2018																																																																																																																																																																																																																																																																																																																																																																																																																																																																																																																																																																																																																																																																																																																																																																																																																																																																																																																																																																																																																																																																																																																																																																																																																																																																																																																																																																																																																																																																																																																																																																																																																																																																																																																																																																																																																																																																																																																																																																																																																																																																																																																																																																																																																																																																																																																																																																																																																																																																																										

BIM MODEL M-BAR-1F4TS0-CA00-BIM-000002-ARCHITECTURE.Mt



- THIS DRAWING IS TO BE READ IN CONJUNCTION WITH DCN:M-BAR-1F4TS0-CA00-DCN-000001.
CHANGES RELATED TO THIS DCN ARE CLOUDED AND MARKED WITH A REVISION TRIANGLE 001v02

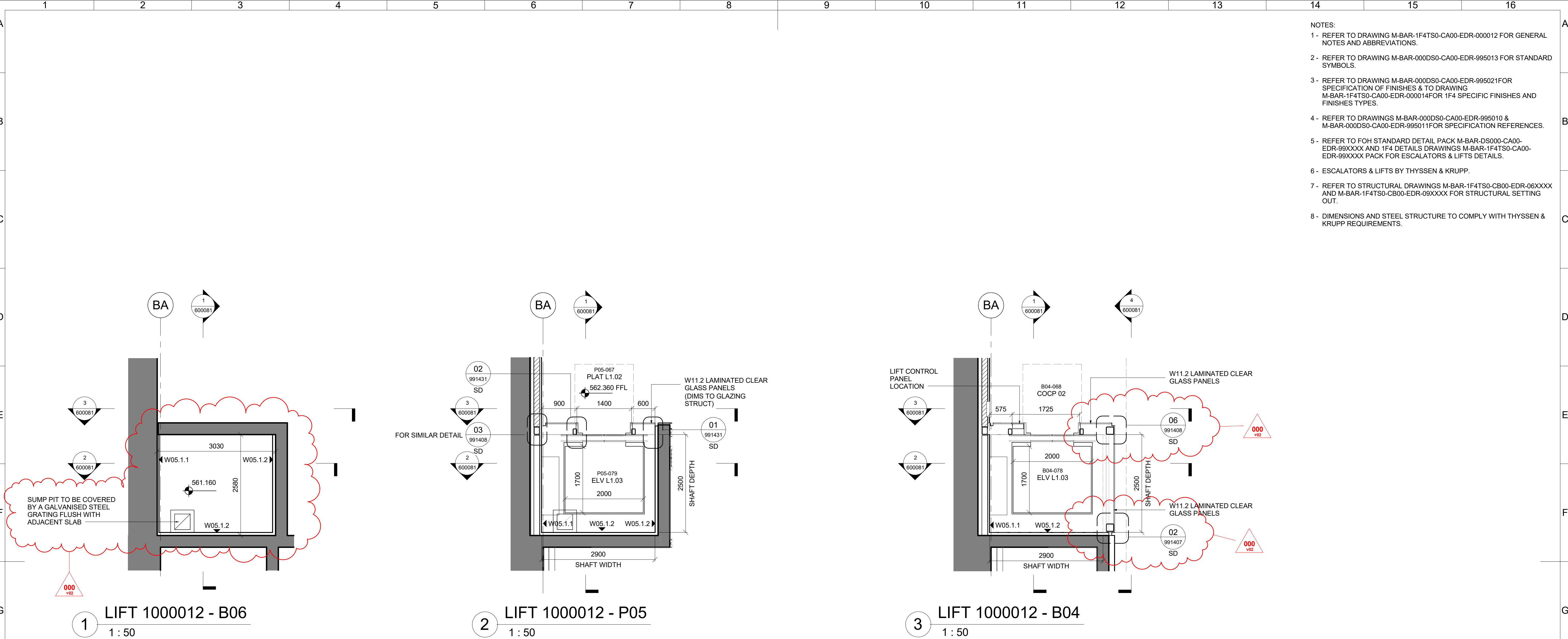
<p>PROJECT</p> 	<p>BACS CONSORTIUM</p>  <p>www.bacsrmmp.com</p>	<p>BACS APPROVAL</p> <p>This drawing has been Approved and Certified as acceptable on behalf of the BACS Consortium.</p>		<p>SCALE</p> <p>1 : 50</p>	<p>PAPER SIZE</p> <p>A1</p>	<p>DRAWING TITLE</p> <p>DEEP UNDERGROUND STATIONS LINE 1 - TRANSFER STATION 1F4 ARCHITECTURE LIFT SETTING OUT LIFT 100011 - SHEET 1</p>
<p>CLIENT</p>  <p>الهيئة العامة لتطوير مدينة الرياض</p> <p>© 2015 High Commission for the Development of ArRiyadh</p>	<p>LEAD DESIGN ENTITY (LDE)</p>	<p>APPROVED BY LDE</p> <p>NAME</p> <p>DATE</p>	<p>DRAWN BY</p> <p>NAME</p> <p>L. DAVIS</p> <p>DATE 23/03/2018</p>	<p>CHECKED BY</p> <p>NAME</p> <p>A. PAYA PEREZ</p> <p>DATE 23/03/2018</p>	<p>APPROVED BY</p> <p>NAME</p> <p>J. BATCHELOR</p> <p>DATE 23/03/2018</p>	<p>DRAWING NUMBER</p> <p>M-BAR-1F4TS0-CA00-EDR-600070</p> <p>REVISION</p> <p>000</p>

DO NOT SCALE FROM THIS DRAWING

Electronic drawings once printed, are uncontrolled and may become outdated. Refer to Aconex for current revision.

TIME/STAMP 03/07/2018 13:37:54

BIM MODEL M-BAR-1F4TS0-CA00-BIM-000002-ARCHITECTURE.M

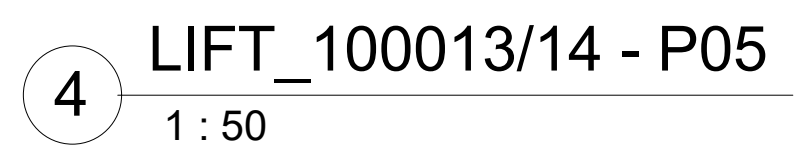
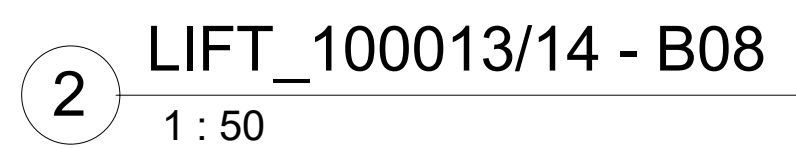


- NOTES:
- 1 - REFER TO DRAWING M-BAR-1F4TS0-CA00-EDR-000012 FOR GENERAL NOTES AND ABBREVIATIONS.
 - 2 - REFER TO DRAWING M-BAR-000DS0-CA00-EDR-995013 FOR STANDARD SYMBOLS.
 - 3 - REFER TO DRAWING M-BAR-000DS0-CA00-EDR-995021 FOR SPECIFICATION OF FINISHES & TO DRAWING M-BAR-1F4TS0-CA00-EDR-000014 FOR 1F4 SPECIFIC FINISHES AND FINISHES TYPES.
 - 4 - REFER TO DRAWINGS M-BAR-000DS0-CA00-EDR-995010 & M-BAR-000DS0-CA00-EDR-995011 FOR SPECIFICATION REFERENCES.
 - 5 - REFER TO FOH STANDARD DETAIL PACK M-BAR-DS000-CA00-EDR-99XXXX AND 1F4 DETAILS DRAWINGS M-BAR-1F4TS0-CA00-EDR-99XXXX PACK FOR ESCALATORS & LIFTS DETAILS.
 - 6 - ESCALATORS & LIFTS BY THYSSEN & KRUPP.
 - 7 - REFER TO STRUCTURAL DRAWINGS M-BAR-1F4TS0-CB00-EDR-06XXXX AND M-BAR-1F4TS0-CB00-EDR-09XXXX FOR STRUCTURAL SETTING OUT.
 - 8 - DIMENSIONS AND STEEL STRUCTURE TO COMPLY WITH THYSSEN & KRUPP REQUIREMENTS.


THIS DRAWING IS TO BE READ IN CONJUNCTION WITH DCN:M-BAR-1F4TS0-CA00-DCN-000001.
CHANGES RELATED TO THIS DCN ARE CLOUDED AND MARKED WITH A REVISION TRIANGLE 001v02

REVISIONS						PROJECT			BACS CONSORTIUM		BACS APPROVAL		SCALE		PAPER SIZE		DRAWING TITLE	
No	Date	Description	Drawn LD	Checked APP	Approved JB	CLIENT			LEAD DESIGN ENTITY (LDE)		APPROVED BY LDE		DRAWN BY		CHECKED BY		APPROVED BY	
000	23/03/18	ISSUED FOR CONSTRUCTION				قطار الرياض riyadh metro			BACS RIYADH METRO PROJECT www.bacsrmp.com		This drawing has been Approved and Certified as acceptable on behalf of the BACS Consortium.		NAME L. DAVIS		NAME A. PAYA PEREZ		NAME J. BATCHELOR	
						الهَيَاة الْعَلِيَا لِتَطْوِير مَدِينَةِ الرِّيَاذ			DATE 23/03/2018		DATE 23/03/2018		DATE 23/03/2018		DATE 23/03/2018		DRAWING NUMBER	
						© 2015 High Commission for the Development of ArRiyadh											M-BAR-1F4TS0-CA00-EDR-600080	
																	REVISION	
																	000	
																	000v01	

BIM MODEL M-BAR-1F4TS0-CA00-BIM-000002-ARCHITECTURE.mt



- THIS DRAWING IS TO BE READ IN CONJUNCTION WITH DCN:M-BAR-1F4TS0-CA00-DCN-000001.
CHANGES RELATED TO THIS DCN ARE CLOUDED AND MARKED WITH A REVISION TRIANGLE 001v02

PROJECT	
CLIENT	
© 2015 H	



الهَيئة العُلَيَا
لتطوير مدينة الرياض

© 2015 High Commission for the Development of ArRiyadh



LEAD DESIGN ENTITY (LDE)

100

Figure 1

BACS APPROVAL

	APPROVED BY LDE
	NAME
	DATE

DRAWN BY
NAME L. DAVIS
DATE 23/03/2018

CHECKED BY	
NAME	A. PAYA PEREZ
DATE	23/03/2018

	APPROVED BY
Z	NAME J. BATCHELOR DATE 23/03/2018

SCALE
1 : 50

PAPER
SIZE **A1**

DRAWING STATUS		
ISSUED FOR CONSTRUCTION		

CONSULTANT / SUB-CONTRACTOR

ARUP

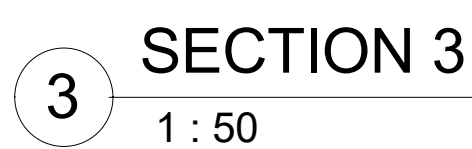
DRAWING TITLE

DEEP UNDERGROUND STATIONS
LINE 1 - TRANSFER STATION 1F4
ARCHITECTURE
LIFT SETTING OUT
LIFT 100013/14 - SHEET 2

DRAWING NUMBER	M-BAR-1F4TS0-CA00-EDR-600090
----------------	------------------------------

REVISION	000
----------	-----

6	000v01
---	--------



PROJECT
CLIENT

© 2015 H

© 2015 High Commission for the Development of ArRiyadh

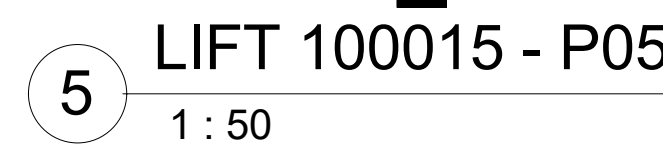
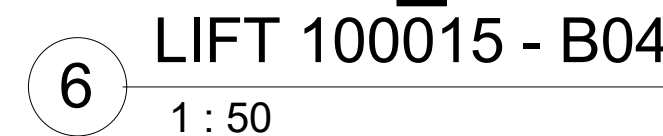
لهيئة العليا
تطوير مدينة الرياض

LEAD DESIGN ENTITY (LDE)

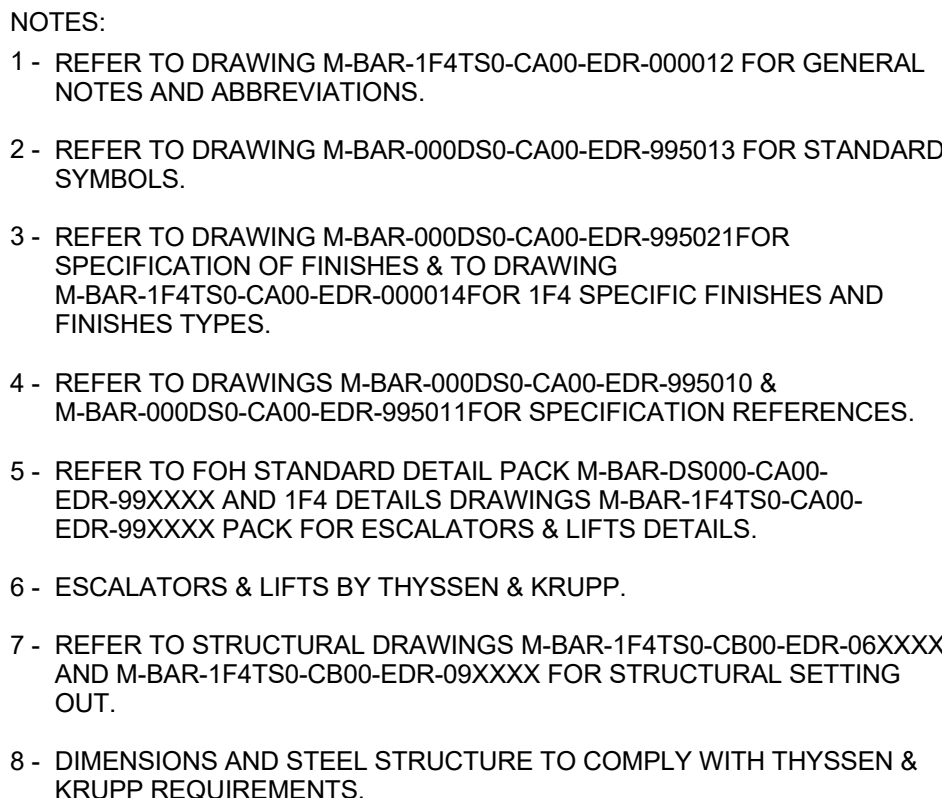
DRAWING NUMBER	REVISION
M-BAR-1F4TS0-CA00-EDR-600100	000

NOTES:

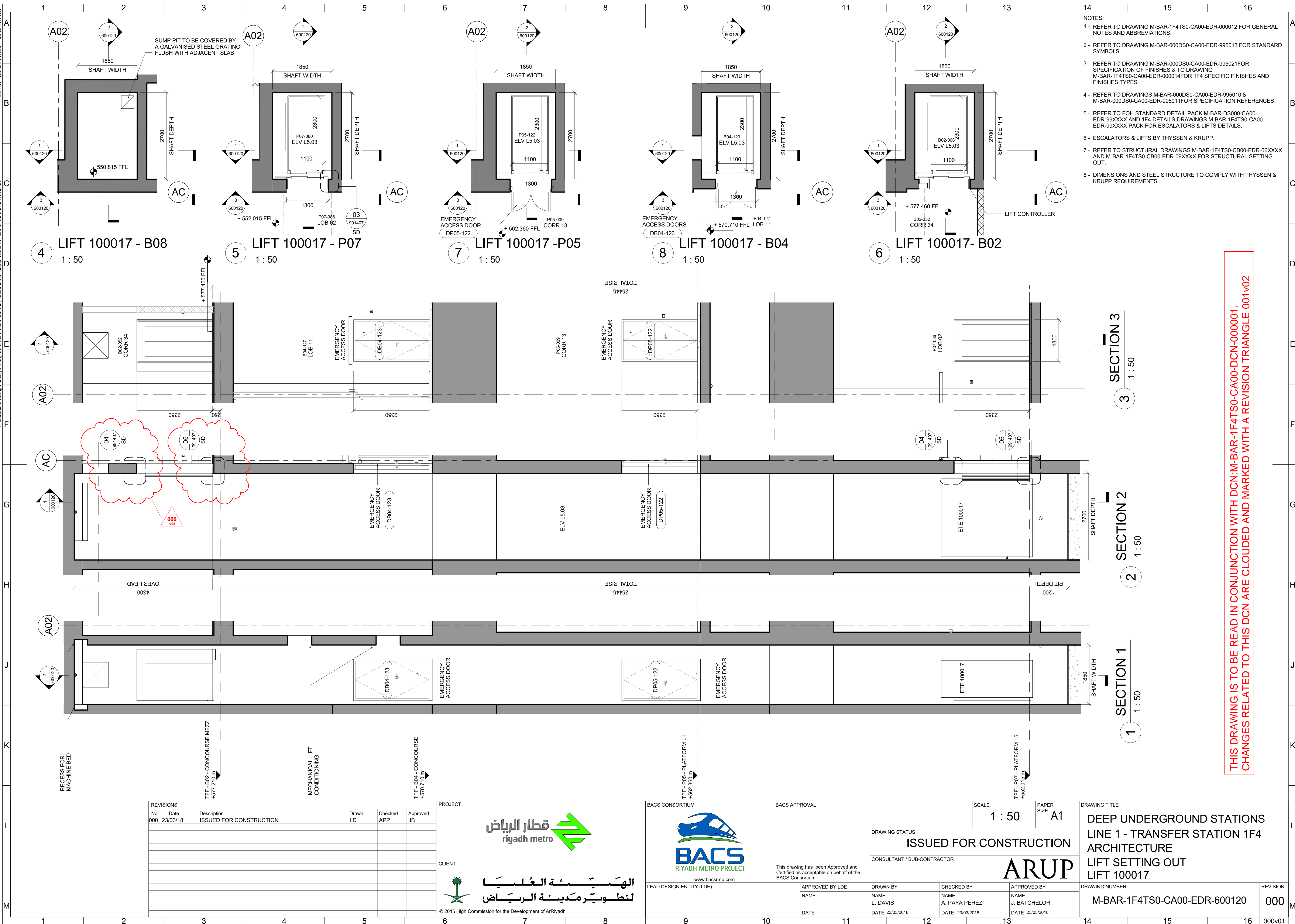
- 1- REFER TO DRAWING M-BAR-1F4TS0-CA00-EDR-000012 FOR GENERAL NOTES AND ABBREVIATIONS.
- 2- REFER TO DRAWING M-BAR-000DS0-CA00-EDR-995013 FOR STANDARD SYMBOLS.
- 3- REFER TO DRAWING M-BAR-000DS0-CA00-EDR-995021FOR SPECIFICATION OF FINISHES & TO DRAWING M-BAR-1F4TS0-CA00-EDR-000014FOR 1F4 SPECIFIC FINISHES AND FINISHES TYPES.
- 4- REFER TO DRAWINGS M-BAR-000DS0-CA00-EDR-995010 & M-BAR-000DS0-CA00-EDR-995011FOR SPECIFICATION REFERENCES.
- 5- REFER TO FOH STANDARD DETAIL PACK M-BAR-DS000-CA00-EDR-99XXXX AND 1F4 DETAILS DRAWINGS M-BAR-1F4TS0-CA00-EDR-99XXXX PACK FOR ESCALATORS & LIFTS DETAILS.
- 6- ESCALATORS & LIFTS BY THYSSEN & KRUPP.
- 7- REFER TO STRUCTURAL DRAWINGS M-BAR-1F4TS0-CB00-EDR-06XXXX AND M-BAR-1F4TS0-CB00-EDR-09XXXX FOR STRUCTURAL SETTING OUT.
- 8- DIMENSIONS AND STEEL STRUCTURE TO COMPLY WITH THYSSEN & KRUPP REQUIREMENTS.



THIS DRAWING IS TO BE READ IN CONJUNCTION WITH DCN:M-BAR-1F4TS0-CA00-DCN-000001.
CHANGES RELATED TO THIS DCN ARE CLOUDED AND MARKED WITH A REVISION TRIANGLE 001v02



THIS DRAWING IS TO BE READ IN CONJUNCTION WITH DCN:M-BAR-1F4TS0-CA00-DCN-0000001.
CHANGES RELATED TO THIS DCN ARE CLOUDED AND MARKED WITH A REVISION TRIANGLE 001v02



THIS DRAWING IS TO BE READ IN CONJUNCTION WITH DCN:M-BAR-1F4TS0-CA00-DCN-000001.
CHANGES RELATED TO THIS DCN ARE CLOUDED AND MARKED WITH A REVISION TRIANGLE 001v02